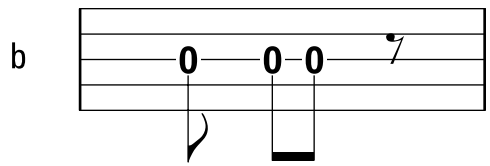
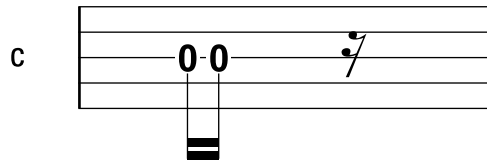


Quarter note/rest  
equals "1 +"



Eighth notes/rest  
equals "1" or "+"



Sixteenth notes/rest  
1/2 count each

**TAB 3-1:** Reading quarter, eighth, and sixteenth notes in banjo tab.

The image shows a musical staff in 4/4 time with four measures. The notes and their durations are as follows:

- Measure 1: Quarter notes on strings 1, 2, 3, and 4.
- Measure 2: Eighth notes on strings 1, 2, 3, and 4, each with a '+' sign.
- Measure 3: Quarter notes on strings 1, 2, 3, and 4, with '+' signs under strings 3 and 4.
- Measure 4: Sixteenth notes on strings 1, 2, 3, and 4, with '+' signs under strings 1 and 2.

**TAB 3-2:** Mixing quarter, eighth, and sixteenth notes.