

TAB 8-1: Finding the notes of the G-major scale on your banjo.

G

Some glad morn - ing when this life is o'er,

C G

I'll _____ fly a - way. _____

G

To a home on God's cel - les - tial shore,

D7 G

I'll _____ fly a - way. _____

TAB 8-2: "I'll Fly Away" basic melody.

G

4
4 0 0 0 2 0 0 2 0 0 0 2 0

Lost all my mon - ey but a two dol - lar bill,

C G

0 0 0 2 0 0 2 0 0 2 0

Two dol - lar bill boys, Two dol - lar bill,

G

0 0 0 2 0 0 2 0 0 0 2 0

Lost all my mon - ey but a two dol - lar bill,

D7 G

0 0 0 2 0 2 0 0 0 0 0

on my long jour - ney home.

TAB 8-3: "Long Journey Home" basic melody.

G

0 0 2 | 4/4 0 0 0 0 2 0 | 0 0 0 0 2 0 | 0 0 0 0 2 0

You are my sun - shine _____ my on - ly sun - shine, _____ You make me

C

1 2 2 2 0 1 | G 0 0 2 0

hap - py when skies are grey, _____ You'll nev - er

C

1 2 2 2 0 1 | 0 0 0 2

know dear how much I love you, _____ Please don't

D7

0 1 2 2 0 | G 0 0 0 0 0

take my sun - shine a - way. _____

TAB 8-4: "You Are My Sunshine" basic melody.

MN

4/4

0 0 0 0

t i m t

MN

0 0 0 0

m i t m

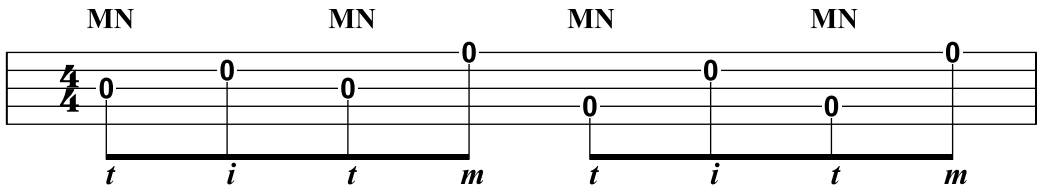
TAB 8-5: Forward-reverse roll melody notes.

MN

MN

t *i* *t* *m* *t* *i* *t* *m*

TAB 8-6: Alternating thumb roll with two melody notes.



TAB 8-7: Alternating thumb roll with four melody notes.

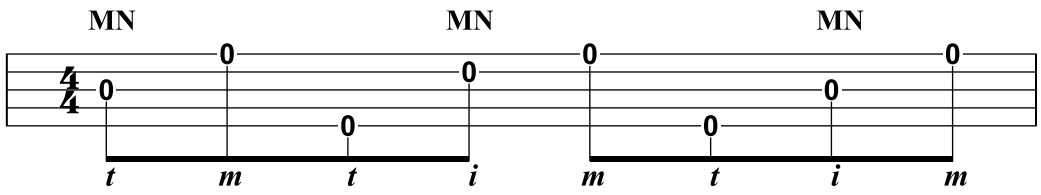
MN → MN → MN

4/4

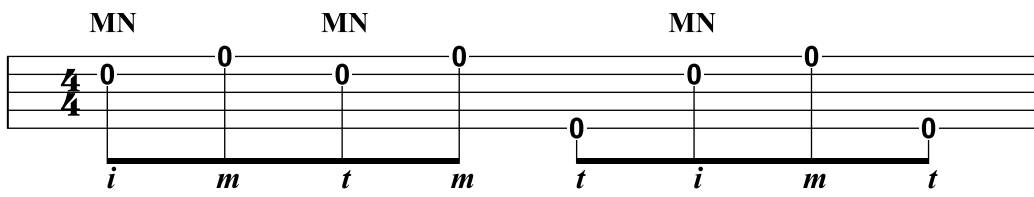
0 0 0 0

t m t i m t i m

TAB 8-8: Forward roll with sustained melody note.



TAB 8-9: Forward roll with three melody notes.



TAB 8-11: Foggy Mountain roll with second-string melody notes.

MN MN MN

$\frac{4}{4}$ 0 0 0 0

i *m* *t* *m* *t* *i* *m* *t*

TAB 8-12: Foggy Mountain roll with third-string melody notes.

MN → MN

4/4

0 0 0 0 0 0 0 0

m i t m i t m i

TAB 8-13: The backward roll with first-string melody notes.

G

Some glad morn - ing when this life is o'er,

C

I'll _____ fly a - way. _____

G

To _____ a _____ home _____ on _____ God's cel - les - tial shore _____

D7 G

I'll _____ fly a - way. _____

TAB 8-14: "I'll Fly Away" solo using alternating thumb rolls.

G

0 0 0 0 | 0 0 0 0 | 2 0 0 0 | 2 3 0 0 | 0 0 0 0 | 0 0 0 0
 t i m t m i t m | t i m t m i t m | t i m t m i t m | s t m i t m | t m t m
 Lost all my mon - ey but a two dol - lar bill,

C

2 3 0 0 | 0 0 0 0 | 0 0 0 0 | 2 0 0 0 | 1 2 2 1 | 2 0 0 0 | 0 0 0 0
 s t i m t m i t m | t i m t m i t m | t i m t m i t m | t m t m
 Two dol - lar bill boys, Two dol - lar bill,

G

0 0 0 0 | 0 0 0 0 | 0 0 2 0 | 0 0 2 0 | 2 3 0 0 | 0 0 0 0 | 0 0 0 0
 t i m t m i t m | t i m t m i t m | t i m t m i t m | t m t m
 Lost all my mon - ey but a two dol - lar bill, I'm

D7

0 0 0 0 | 2 1 0 0 | 1 2 0 0 | 0 0 0 0 | 2 3 0 0 | 0 0 0 0
 m m i m t | t i m t m i t m | t m t m i t m | t m t m
 on my long jour - ney home.

TAB 8-15: "Long Journey Home" solo using forward-reverse rolls.

G

0 0 2 | 0 0 0 0 0 0 | 0 0 0 2 0 | 0 0 0 0 0 | 0 0 2 0

t t t t m t i m t i m t i m t i i t m t i m t i m t i m t i i

You are my sun - shine _____ my on - ly sun - shine, _____ You make me

C G

1 1 2 1 2 | 1 2 0 1 | 0 0 0 0 0 0 | 0 0 2 0

i t i m t i m t i m t m i t m t i m t i m t i m t i i

hap - py when skies are grey, _____ You'll nev - er

C

1 1 2 1 2 | 1 2 0 1 | 0 0 0 0 0 0 | 0 0 2 0

i t i m t i m t i m t m i t m t i m t i m t i m t i i

know dear how much I love you, _____ Please don't

D7 G

0 0 0 0 1 0 | 2 0 2 0 0 0 | 0 0 2 3 0 | 0 0 0 0

t m t i m t i m t m t i m t i m t m t s i t m t m t

take my sun - shine a - way, _____

TAB 8-16: "You Are My Sunshine" solo using forward rolls.

G

Some glad morn - ing when this life is o'er,

C G

I'll fly a - way.

G

To a home on God's cel - les - tial shore.

D7 G Fill-in lick

I'll fly a - way.

TAB 8-17: "I'll Fly Away" solo using fretting techniques.

G

2-3 0 0 2 | 0 0 0 2 | 2-5 0 0 2 | 2-3 0 0 3-2 | 0 0 0 0
 s t i m i t m t t m t i t m t i m t i m t s t i m t m i t m t t i m t i m

Lost all___ my mon - ey but a two dol - lar bill,

C G

2-3 0 0 3-2 | 0 0 0 0 | 0 1 2 2 | 0 0 0 0 | 0 0 0 0
 s t i m t m i t m t t i m i t m h t i t m t i t m t m t m t

Two dol - lar bill boys, Two dol - lar bill,

G

0 0 0 2 | 2-5 0 0 2 | 2-3 0 0 3-2 | 0 0 0 0
 t t m t i t m s t i m t i m t s t i m t m i t m t m t m t

Lost all___ my mon - ey but a two dol - lar bill,___ I'm___

D7 G Fill-in lick 1 Fill-in lick 2

2-3 3-2 0 | 2-2 3-2 0 | 0 2-3 0 0 | 5 0 0 3-2 | 0 0 0 0
 h t i m t i m t t m t i m t i t i m i t m t m m i t m t m t

on my___ long jour - ney home._____

TAB 8-18: "Long Journey Home" solo using fretting techniques.

G

m *t* *t* *t* | *t* *i* *m* *t* *i* *m* *t* *i* | *m* *t* *i* *m* *t* *i* *t* *m* | *m* *t* *t* *i* *m* *t* *i* *m* *t* *i* | *t* *i* *t* *m*

Will the cir - cle _____ be un - bro - ken, _____ By_ and_

G G

t *t* *i* *m* *t* *i* *m* | *t* *i* *t* *m* *t* *i* *t* *m* | *t* *t* *i* *m* *t* *i* *m* | *t* *i* *t* *m* *t* *t*

by _____ Lord by _____ and_ by, _____ There's a

t *i* *m* *t* *i* *m* *t* *i* | *m* *t* *i* *m* *i* *m* *i* | *t* *t* *i* *m* *t* *i* *m* *t* *i* | *t* *i* *t* *m* *i*

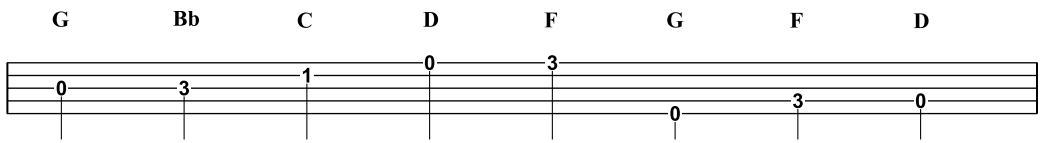
bet - ter _____ home a - wait - ing, _____ In the

D G

m *i* *t* *t* *i* *t* *m* | *t* *i* *t* *m* *t* *i* *t* *m* | *t* *t* *i* *t* *m* | *t* *t* *i* *m* *t* *i* *m* | *t* *i* *t* *t* *t* *t*

sky_ Lord _____ in _____ the _____ sky. _____

TAB 8-20: "Will the Circle Be Unbroken" solo using fretting techniques.



TAB 8-21: The G pentatonic minor scale.

G

4
4

i r r C i

I am a man of con - stant sor - row,

p D i r G

I've seen trou - - ble all my days.

TAB 8-22: "Man of Constant Sorrow" basic melody.

The image displays four lines of guitar tablature for the piece "Cluck Old Hen." The music is in 4/4 time and features a mix of chords including G, C, F, D7, and G. The tablature includes various techniques such as slurs, accents, and dynamic markings like 's' (soft) and 'p' (piano). The lyrics are written below the notes.

Line 1: Chords: G, C, G, D7, G. Notes: i, 0, 3, 2 | 3, 5, 3, 3 | 2, 3, 0, 3 | 5, 2, 3, 0 | 2, 3, 0, 0 | 3, 5, 3, 2 | 0, 1, 3, 0 | 2, 3, 0, 0. Lyrics: t m | t i m t m i | t m | t i m t m i | t m | t i m t m m | m i t m t t m | t m

Line 2: Chords: C, G, D7, G. Notes: 3, 5, 3, 3 | 0, 3, 5, 2 | 2, 3, 0, 3 | 3, 5, 3, 3 | 2, 0, 1, 3 | 0, 0, 0, 0. Lyrics: t i m t m i t m | t i m t m i | t m | t i m t m i m t | m i t m t m | t m

Line 3: Chords: F, G, D7, G. Notes: 0, 3, 0, 0 | 3, 0, 0, 0 | 0, 3, 0, 3 | 0, 3, 0, 3 | 0, 3, 0, 3 | 1, 0, 1, 3 | 0, 0, 0, 0. Lyrics: i t i m t t m | i t i m t t m | i t i m t t m | i t i m t i | m i t m t m | t m

Line 4: Chords: F, G, D7, G. Notes: 0, 3, 0, 3 | 3, 0, 3, 0 | 0, 3, 0, 3 | 1, 0, 3, 0 | 3, 0, 1, 3 | 0, 0, 0, 0. Lyrics: i t i m t t m | t i i t t m | i t i m t i | m i t m t t m | t m

TAB 8-24: Picking it lonesome with "Cluck Old Hen."

G C

G lick #3 C lick #4

4/4

t i m t m i t m t t i m t i m t i t m t i m t m t i m t m i

D G

D lick #8 Fill-in lick #4

t m m t m t i m t m i t m t m t i m t m i m m i t m t m t m t m

TAB 8-25: Using licks to build a solo, version 1.

G C
 G lick #7 C lick #8

t m t i m t i m t i m t i m i/t m t i m t i m t i m t m i t m

D G
 D lick #3 G lick #10

t m t i m t i m t i t m t i t m t t m t i m t m t i m t

m t i m i t m t m t t

TAB 8-26: Using licks to build a solo, version 2.

G

Roll in _____ my _____ sweet _____ ba - by's _____ arms, _____

D

Roll in _____ my _____ sweet _____ ba - by's _____ arms, _____

G C

Lay a - round the _____ shack _____ 'til the _____ mail train _____ gets back, _____

D G G

Roll in _____ my _____ sweet _____ ba - by's _____ arms, _____

TAB 8-27: "Roll in My Sweet Baby's Arms," building a solo using licks.

i r p r i m r

i/t m t i m i t m i t m t i m t

TAB 8-28: Up-the-neck G fill-in lick.

G

10 10 0 10 0 10 10 0 0 11 10 0 8 8 9 8 9

$\frac{1}{2}$ $\frac{1}{2}$ $\frac{1}{2}$ $\frac{1}{2}$ $\frac{1}{2}$ $\frac{1}{2}$

i t m t i m t i t m t i m t i t i m i t m

TAB 8-29: Up-the-neck G lick using bends.

C

4/4

m p i p r p i p

10 8 10 8 10 10 10 8 10 8 10 0 0 0 0

s

i/t m t m t i m t i m t t i m t t i m t t i m t t i m t t i m t t i m t t i m t t i m t

TAB 8-30: Up-the-neck C lick.

D

4/4

m p i p i m

12 10 12 10 12 11 12 11 12 11 12 0 0

s *i/t* *m* *t* *m* *t* *i* *m* *t* *i* *m* *t* *m* *t* *i* *m* *t* *t* *i* *m* *t* *0*

TAB 8-31: Up-the-neck D lick.

