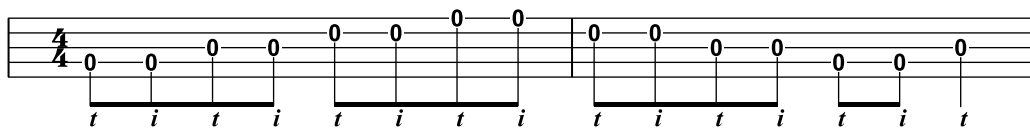


4/4

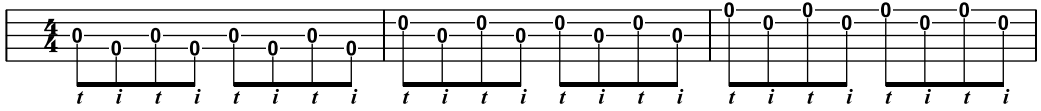
0-0-0-0 0-0-0-0 0-0-0-0 0-0-0-0 0-0-0-0 0-0-0-0 0-0-0-0 0

t i t i t i t i t i t i t i t m

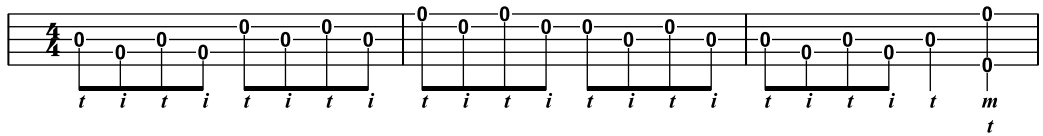
TAB 12-1: Basic single-string technique, playing four notes per string.



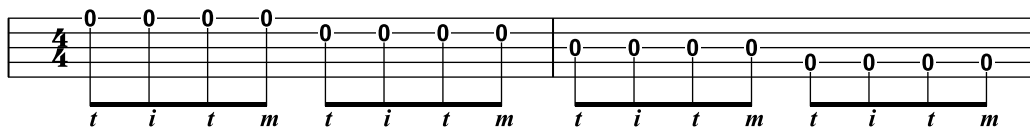
TAB 12-2: Basic single-string technique, playing two notes per string.



TAB 12-3: Single-string crossovers, one-measure groupings.



TAB 12-4: Single-string crossovers, half-measure groupings.



TAB 12-6: Using the alternating thumb roll in single-string playing.

The image shows a musical staff with a treble clef and a 6/8 time signature. The staff contains four measures of music. Each measure consists of a single note on the first line (G4) with a finger number '0' above it. The notes are connected by a horizontal line, and a thick black bar underneath each measure indicates a forward roll. Below each measure, the letters 't', 'i', and 'm' are written, representing the thumb, index, and middle fingers used for the roll. The first measure starts with a '0' on the first line, followed by two more '0's on the first line. The second measure starts with a '0' on the first line, followed by two more '0's on the first line. The third measure starts with a '0' on the first line, followed by two more '0's on the first line. The fourth measure starts with a '0' on the first line, followed by two more '0's on the first line.

TAB 12-9: Using forward rolls to shift string in 6/8 time in single-string banjo.

m i i r p r i i m r i
 4/4 0 2 0 1 0 2 4 5 4 2 0 1 0 2 0 4 2 0 0

t i t i t i t i t i t i t i t i t i t

TAB 12-10: Playing a G-major scale in open position.

p i r p i m i m i r i p r i p r i

t i t i t i t i t i t i t i t i t i t

TAB 12-11: Playing a G-major scale in closed position.

i r p i r i m i r p r i m i r i p r i

t i t i t i t i t i t i t i t i t

TAB 12-13: Playing a D-major scale in closed position.

m p i m p i r i m p m i r i p m i p m i m p m

The musical notation consists of a single staff with a 4/4 time signature. The notes and fingerings are as follows:

- Measure 1: G4 (m), A4 (p), B4 (i), A4 (m), G4 (p), F#4 (i), E4 (r), D4 (i)
- Measure 2: C4 (m), B3 (p), A3 (m), G3 (p), F#3 (i), E3 (r), D3 (i), C3 (m)
- Measure 3: B2 (p), A2 (m), G2 (p), F#2 (i), E2 (r), D2 (i), C2 (m), B1 (p)
- Measure 4: A1 (m), G1 (p), F#1 (i), E1 (r), D1 (i), C1 (m), B0 (p), A0 (m)
- Measure 5: G0 (p), F#0 (i), E0 (t), D0 (i), C0 (t), B0 (i), A0 (t), G0 (i)

TAB 12-14: Playing a G-major scale starting on the middle finger.

i m p i m p i m p i m p m i p m i p m i p m i

TAB 12-15: Playing a G-major scale starting on the index finger.

a. i r p i m p i m p i m p m i p m i p m i p r i

b. i m p i r p i r p i m p m i p r i p r i p m i

c. i m p i m p i m p i r p r i p m i p m i p m i

d. i m p i m p i m p i m p m i p m i p m i p m i

e. i r p i r p i m p i m p m i p m i p r i p r i

f. i m p i m p i r p i r p r i p r i p m i p m i

TAB 12-16: Exploring the different ways to play a G-major scale using modes: (a) Dorian, starting on the second note of the G-major scale; (b) Phrygian, starting on the third note of the G-major scale; (c) Lydian, starting on the fourth note of the G-major scale; (d) Mixolydian, starting on the fifth note of the G-major scale; (e) Aeolian, starting on the sixth note of the G-major scale; and (f) Locrian, starting on the seventh note of the G-major scale.

D r i r i r i r i r G D A
 0 4 2 4 0 2 4 2 0 4 0 2 4 0 4 0 4 2 4 2 0 2 4 0 4 2

t t t t i t i t i t i t i t t i t t i t i t i t i t

D r i i r i r i r G D A D
 0 4 2 4 0 2 4 2 0 4 0 2 4 0 4 0 4 2 4 2 0 2 4 0 0

t t t t i t i t i t i t i t t t i t t i t i t i t m

D i m i m i r m p m r i m i Em A
 2 3 3 2 3 2 4 3 5 3 4 2 3 2 0 0 2 3 2 4 5 4 2 3 2 3 2 2

t i t i t i t i t m m i t i m i t i t i t i t i t i

D A G D G D A D
 m r i i i i r i r i r i r G D A D
 3 4 3 2 2 4 2 4 3 4 2 4 0 4 0 4 2 4 2 0 2 4 0 0

t t i t t i t i t t i t i t t t t i t t i t i t i t m

TAB 12-18: "Whiskey Before Breakfast," using open and closed positions in the key of D.

Em
i

D
i r

Em

G
m

D
i r

Em

D

G

r i

D
r i

Em

i

r

r

D

Em

D

Em

D

G

D

Em

r i

D
r i

Em

D

Em

D

Em

D

G

A
m

D

G

D

Em

TAB 12-22: "Morrison's Jig," an Irish tune using open and closed positions in E minor.